



Wireless data solutions for fixed and mobile asset management



Whether remote commercial assets are fixed or mobile, pervasive wireless data communications that leverage existing cellular networks can help streamline operations, significantly improve data capture and management capabilities, and reduce costs. Wireless asset management allows realization of significant ROI in various applications through the integration of real-time data into the enterprise for accurate monitoring, control, reporting, archiving and compliance.

Pervasive connectivity to fixed and remote assets can benefit a wide range of applications:



Mobile Data – Fleet Management, Asset Tracking, Public Safety, Mobile Enterprise

Location tracking and information dissemination are two critical components of managing mobile assets. AirLink's location-based products coupled with 3rd party tracking applications enable reliable two-way command and field communication, as well as vehicle location information. Sample applications include trucking, towing, taxi/limousine services, police, fire/rescue, medical and social care services.

Utilities/Automation – Electric, Oil and Gas, Water

Utility companies manage remote assets spread over extensive areas. AirLink's wireless solutions enable telemetry and SCADA applications to help utility companies with a variety of applications, including infrastructure management, automated meter reading, real-time system monitoring, and transmission and distribution measurement and control. AirLink has partnered extensively with PLC and meter manufacturers to deliver reliable automation solutions.

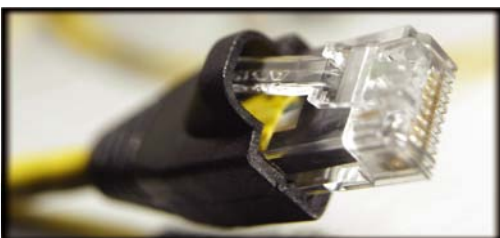


Infrastructure – Homeland Security, Disaster Recovery, Intelligent Transportation, Remote Monitoring

Safety and reliability are important factors for all networked infrastructure systems. AirLink's rugged modems enable secure, cost-effective, always-on data exchange between security points, as well as control centers and their remote devices. Applications include persistent monitoring of critical remote assets and systems, contaminant screening, real-time traffic updates, and condition reporting.

Financial – POS, ATM, and Kiosk Connectivity

Under pressure to reduce operating costs and improve customer service, many retailers and banks are looking to public wireless networks for reliable and flexible IP services. With a robust feature set and remote management capabilities, AirLink modems provide a compelling choice for these solutions.



Wireless Internet Connectivity - Cellular Ethernet Gateways

AirLink provides the perfect solution for networks, PCs, or any device requiring an Ethernet interface to high-speed cellular data networks. AirLink's WWAN-enabled Ethernet gateway products are interoperable with standard Ethernet routers and residential gateways, so no special cabling or equipment is required.

ALEOS – AirLink’s Robust Embedded Software Platform

The AirLink Embedded Operating System (ALEOS) is the industry benchmark for reliable and feature-rich embedded intelligence. With extensive capabilities like remote monitoring and configuration, packet-level diagnostics and over-the-air firmware updates, ALEOS simplifies integration, installation, operation and maintenance of any wireless data solution. ALEOS provides the “always-on” and “always aware” connection management required for today’s mission-critical applications.



AirLink Modem Products

AirLink offers modems for all major public wireless technologies, including CDMA EV-DO, CDMA 1x, EDGE, GPRS, and iDEN.



PinPoint

Combining the rich, location-based intelligence provided by ALEOS with an embedded, high precision GPS receiver, the PinPoint provides a cost-effective and robust platform for countless mobile workforce and asset tracking applications. Tightly integrated with the AirLink Tracking System and other 3rd party tracking applications, the PinPoint is a flexible and scalable communications platform for many location-based and mobile data solutions.

PinPoint Ethernet

With the same robust functionality as the PinPoint, the PinPoint-E's added Ethernet interface allows for easy integration and provides an 'always-on' wireless broadband data connection to take full advantage of the latest broadband networks.

Raven

A rugged, intelligent wireless data modem specifically designed for complex mobile data and remote asset management applications, including telemetry, SCADA, intelligent transportation, utility management, remote monitoring, and homeland security. Certified as Class I Division II, the Raven is rated intrinsically safe and suitable for use in hazardous environments. Equipped with ALEOS, the AirLink Raven is a powerful and versatile communications device.

Raven Ethernet

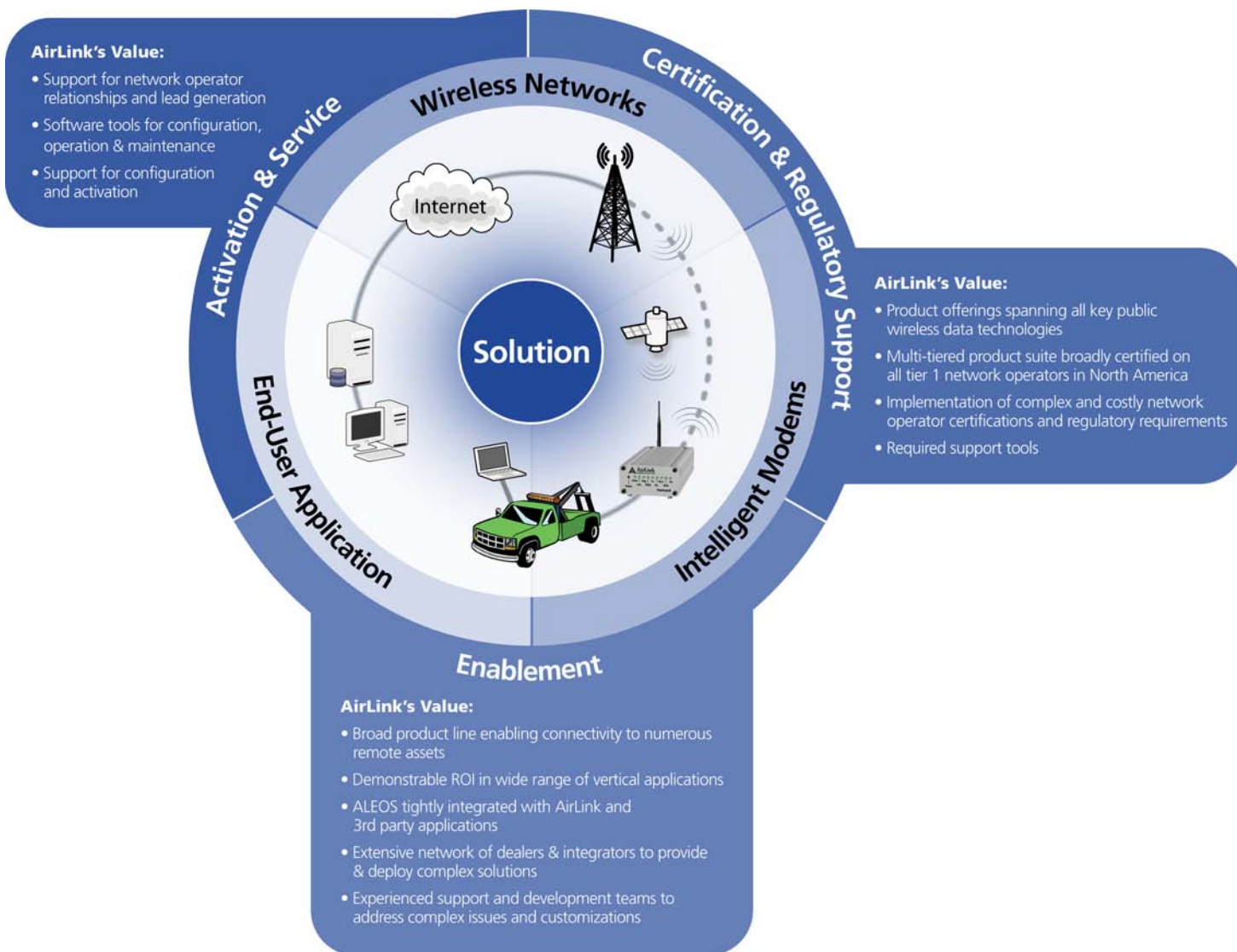
An intelligent wireless gateway, powered by ALEOS, and optimal for providing primary or backup network connectivity for high-availability applications. The Raven-E provides advanced networking features for private or public IP NAT, GRE/IP-SEC pass through, DHCP server and SNMP management. It is the ideal solution for any device with an Ethernet connection that requires pervasive connectivity, including PCs, routers, network equipment, POS/ATMs and commercial automation equipment.

Redwing

An entry-level, low cost, rugged wireless data solution to enable two-way communications with intelligent remote devices.

AirLink's value: wireless solutions made simple

AirLink helps end customers navigate through the complex wireless data ecosystem.



AirLink Communications, Inc. has been a leading provider of fixed and mobile wireless data solutions for more than a decade. A pioneer in the field of machine-to-machine (M2M) communications, AirLink offers wireless solutions that work with existing hardware, software, and communications protocols. Rugged and versatile, AirLink's solutions work on all major public wireless wide area networks (WWAN) available today, and offer a migration path to next generation technologies. AirLink's technical expertise has resulted in a simple, yet powerful reputation - *we make wireless data work.*



3159 CORPORATE PLACE
HAYWARD, CA 94545
PHONE 510.781.9700
FAX 510.781.9799
WEB WWW.AIRLINK.COM